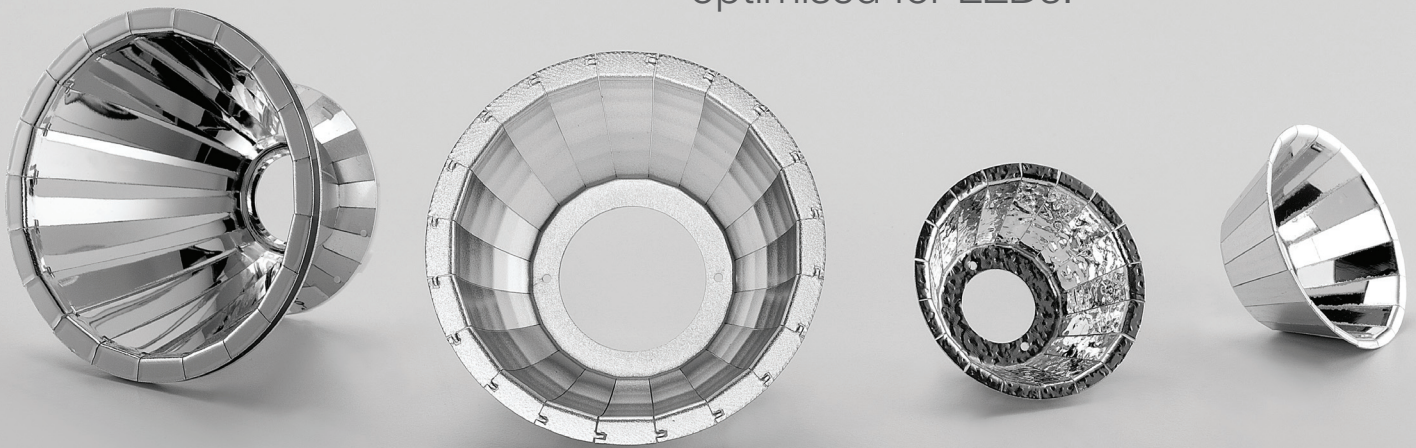


reflect+ATM evo

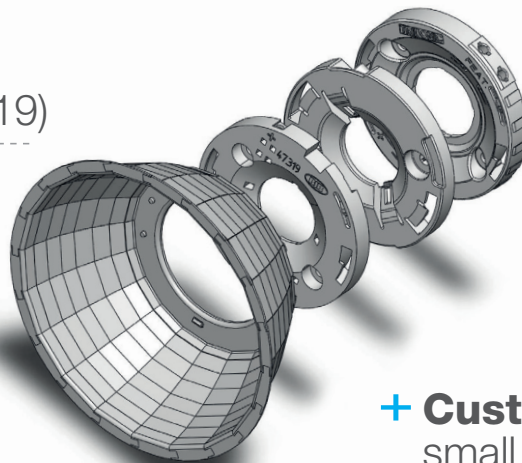
ALMECO, your partner for high reflective aluminium coating and reflector design and production, introduces **the newest reflector range** optimised for LEDs.



+ **Solidity** comparable to spun reflectors thanks to a unique assembly system

+ **No glare** (UGR < 19)

+ Available in **small batches**

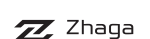


+ **Exclusive connection** with LED holders

+ **The highest efficiency** levels on the market

+ **Customisation** for small quantities

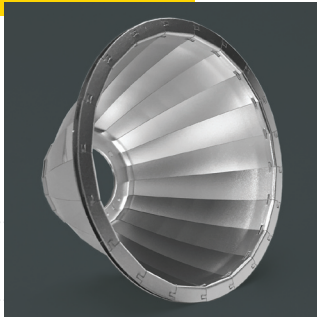
our partners:



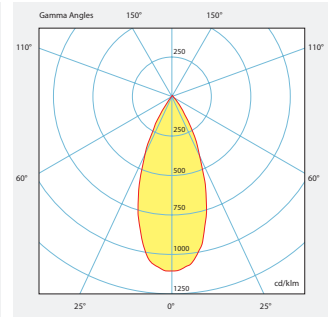
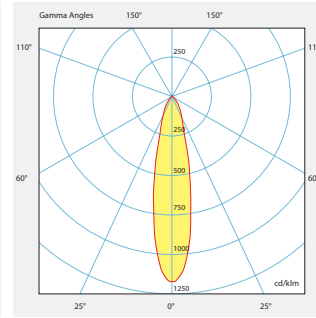
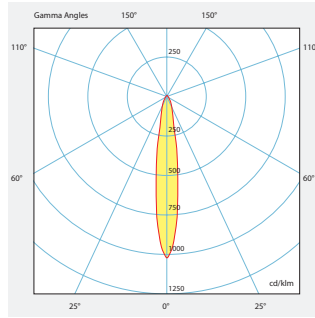
The **evolution** lies in the equation:
3 beams = 1 geometry

Some solutions from our range

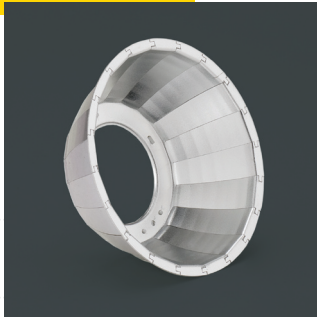
+ EVO106 SERIES



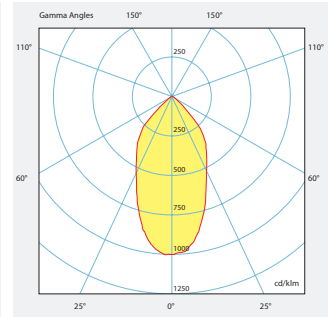
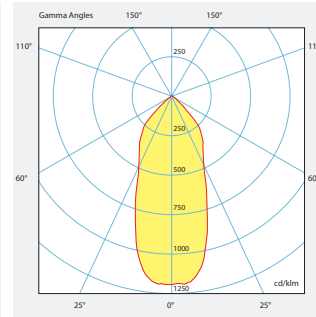
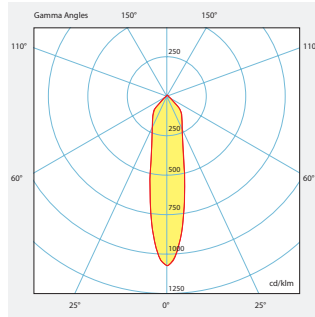
Ø = 120 mm
h = 74.5 mm



+ EVO74 SERIES



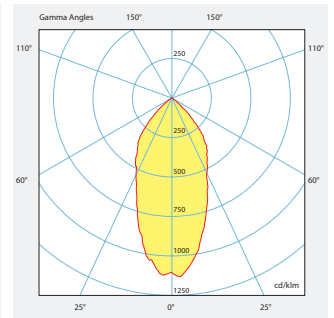
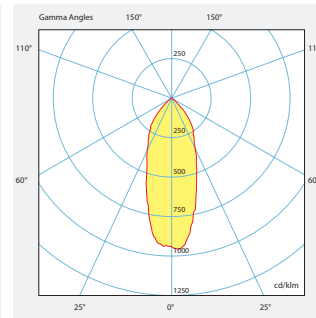
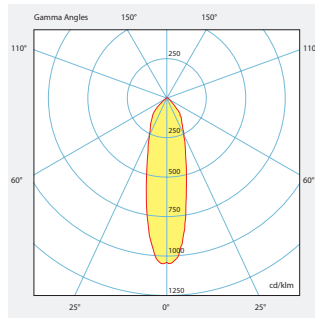
Ø = 82 mm
h = 31 mm



+ EVO42 SERIES



Ø = 45 mm
h = 20 mm



Surf our catalogue
www.almecogroup.com/catalogue
or contact us at
almeco@almecogroup.com



Almeco SpA
Via della Liberazione 15
20098 San Giuliano Milanese (Mi) - Italy
T +39 02 988963 1 F +39 02 988963 99
almeco@almecogroup.com

Your local contact:

