

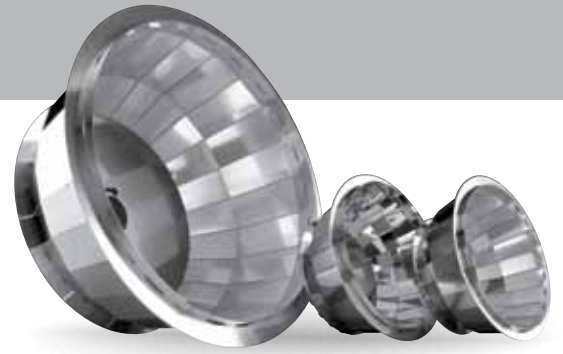
reflect+ATM team

vegaLED98®
reflective surfaces
efficiency class A+



Ready to fit - Easy to use






With more than 50 years of experience in highly reflective aluminium and reflector concepts and applications for lighting, Almeco Group brings together **vegaLED98** and **reflect+A** to form **reflect+A_{team}**, its first catalogue of reflectors ready to use.

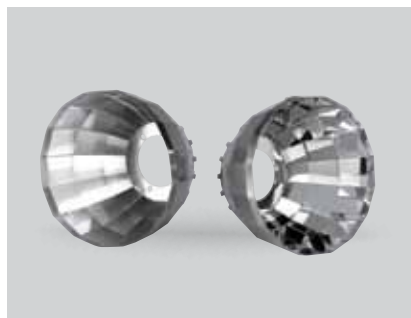
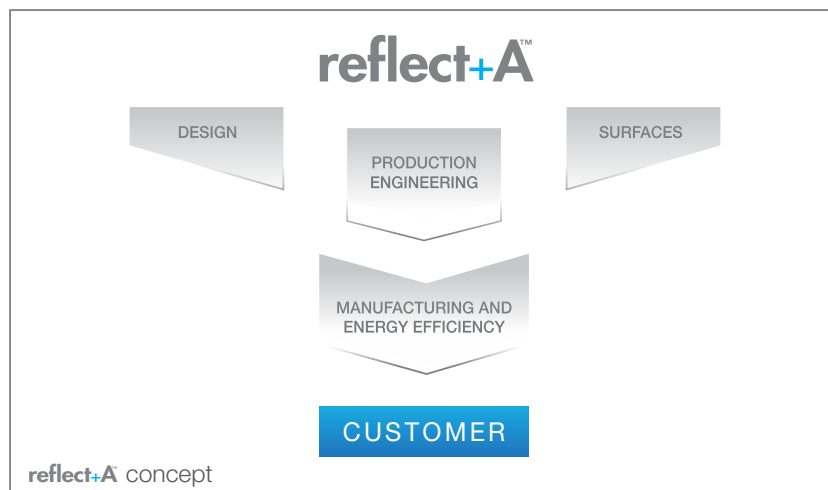
team is a group of **vega98** reflectors for LED light sources with a full set of complementary skills required to fulfil illumination, beautification and energy saving.

team members operate independently to achieve a collective performance in the lit space working towards the common goal of enhanced visual comfort.

team is more than just a collection of reflectors.

team can work in association with **Twist&Lock** , a patented solution for fixing the LED module, LED holder and reflector in one movement, without tools.

Ready to fit - Easy to use.



Examples of reflect+A team's reflectors

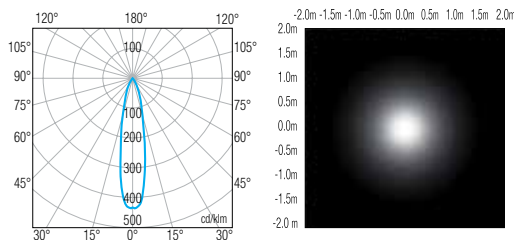


Examples of reflect+A team's reflectors with T&L system

Examples of solutions for some applications

PATENTED

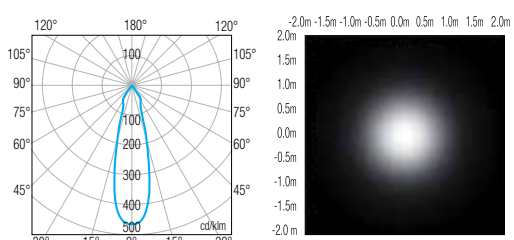
Museum lighting



Polar diagram 6080

Isolux 6080

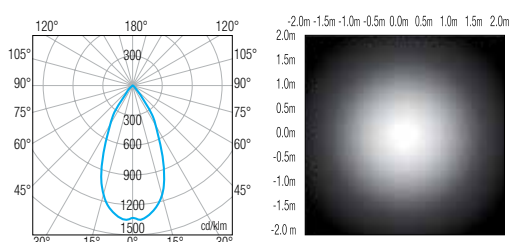
team 6080_01	
LED	Philips - Fortimo SLM GEN2 (LES 19)
Material	vegaLED 98100
Flux	2000 lm
Beam	2 x 10,6°
Efficiency	95%



Polar diagram 6117

Isolux 6117

team 6117_01	
LED	Osram - Prevalco Eco Z2 - CoB (LES 19)
Material	vegaLED 98127
Flux	2000 lm
Beam	2 x 13,5°
Efficiency	90%

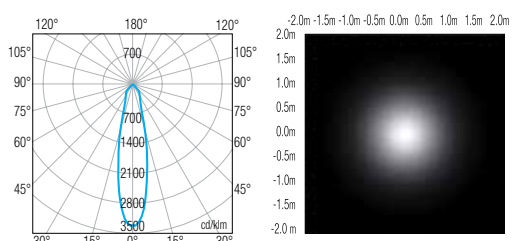


Polar diagram 6123

Isolux 6123

team 6123_01	
LED	Philips - Fortimo SLM GEN2 (LES 19)
Material	vegaLED 98127
Flux	2000 lm
Beam	2 x 24,7°
Efficiency	94%

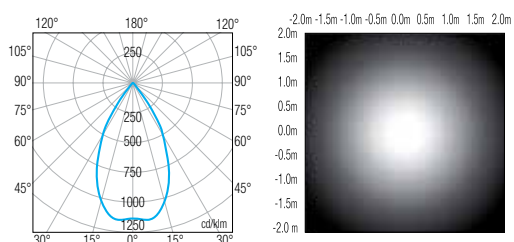
Architectural lighting



Polar diagram 3122

Isolux 3122

team 3122_01	
LED	Bridgelux - ES array
Material	vegaLED 98100
Flux	2000 lm
Beam	2 x 11,5°
Efficiency	96%



Polar diagram 9132

Isolux 9132

team 9132_01	
LED	Philips - Fortimo SLM Lexel
Material	vegaLED 98127
Flux	1100 lm
Beam	2 x 27,8°
Efficiency	92%

All solutions above are powered with **vegaLED98**

Available colours: ● Gold ● Brass ● Titanium

For more colours look at www.bandboxaldecor.com



Twist&Lock

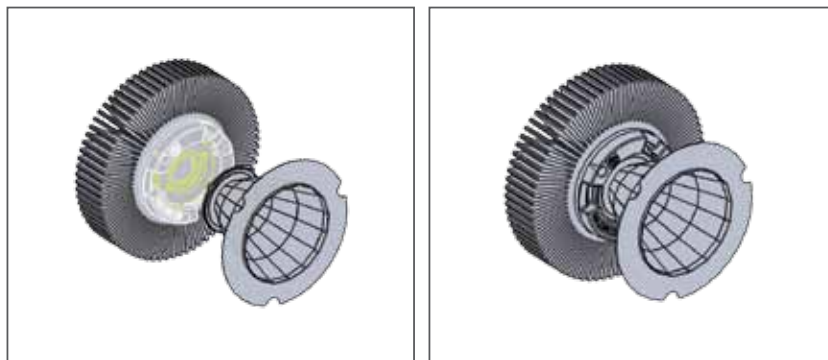
PATENTED

Twist&Lock is used to assembly the LED module into the holder. Intelligent and patented design details enable no-tool installation or disassembly of all **team** reflectors on **Zhaga** compliant LED modules' holders.



Solutions for LED module assembly

- Advantages**
- + Easy and reliable LED module and holder assembly and installation without any screws
 - + Exact positioning of the LED module
 - + Easy LED module replacement and component maintenance after first installation
 - + Reflector fully integrated into the LED module/holder system
 - + Quick replacement of the reflector (appearance, beam)




Positioning...twist...and lock.

In partnership with  **AAG STUCCHI**
Essential for lighting

Main application fields

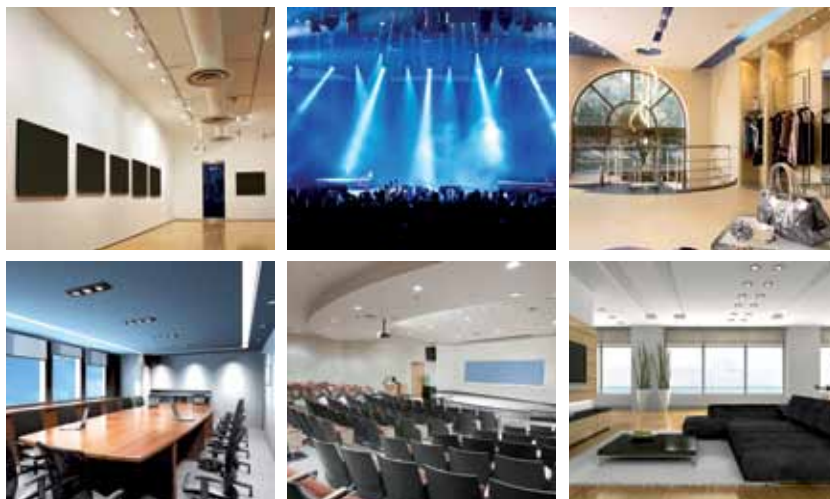
- ▼ Shop Lighting [SHP] - 9000 series
- ▼ Office Lighting [OFF] - 8000 series
- ▼ Open Space Lighting [OPS] - 7000 series
- ▼ Museum Lighting [MUS] - 6000 series
- ▼ Entertainment Lighting [ENT] - 5000 series
- ▼ Educational Lighting [EDU] - 4000 series
- ▼ Architectural Lighting [ARC] - 3000 series

Advantages

- + Perfect LED positioning
- + Easy to be implemented in new fixtures & refitting
- + Maximum flexibility: easy to be customized variety of shapes & more than 20 **vegaLED** finishes
- + Simulated photometries are available for most popular LED sources
- +  Zhaga compatible
- + Up to 99% LOR thanks to **vegaLED98** high reflectance
- + 12% more efficiency than traditional reflectors (deep drawn, spun)

Download the full catalogue at:

www.almecogroup.com/it/products/lighting/reflecta_team



Examples of applications



Milan, Italy - Bernburg, Germany - Munich, Germany
Goncelein, France - Atlanta, USA

Almecco Group - Via della Liberazione 15
20098 San Giuliano M.se (Mi) - Italy
Tel. +39.02.988963.1 - Fax +39.02.988963.99
info.it@almecogroup.com - www.almecogroup.com